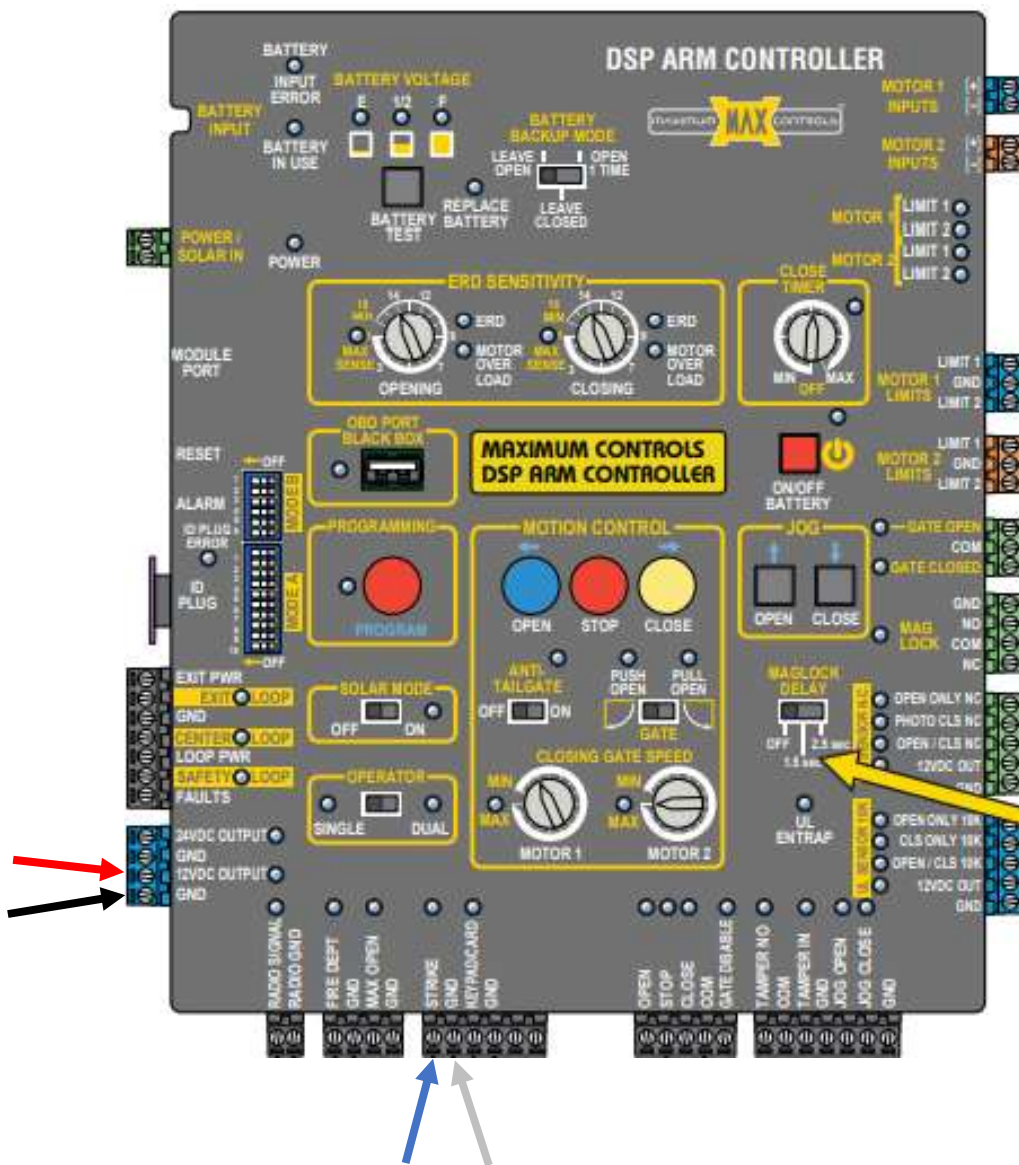


Maximum Controls MAX ARM wiring to a CP-4



1. Connect CP-4 to power, **Red** wire to “12VDC or 24VDC” and **Black** wire to “GND”. Power needs to be constant not switched.
2. Connect **Blue** wire to “STRIKE” and **White** wire to “GND”.
3. **Yellow** wire is not needed for this installation.

CP-4 Power: 8 – 30 VDC or 8 – 24 VAC **Stand-By-Current:** 30 -70 Microamps