

INSTALLATION INSTRUCTIONS FOR CP-4 AUTOMATIC GATE OPENER


1. SERIAL NUMBER

There is a barcode serial number on the bottom of “puck” and on the product box. When calling to talk about your product, please have this number handy.

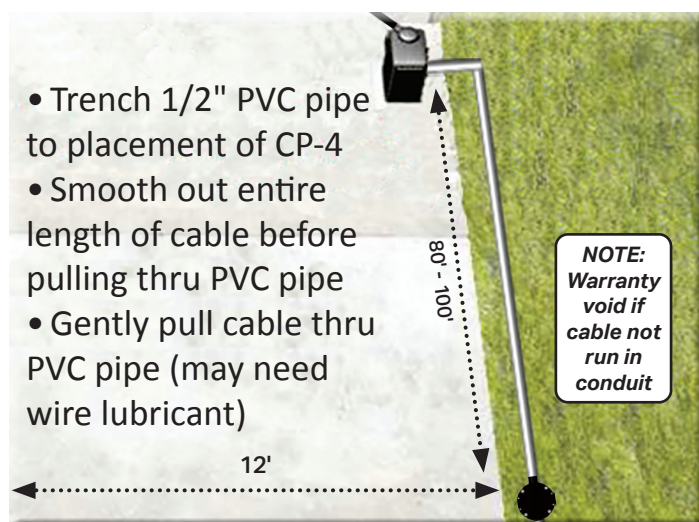


4. CONNECT TO GATE

CP-4 works with all gate operators—powered or solar, single or dual free exit terminals.

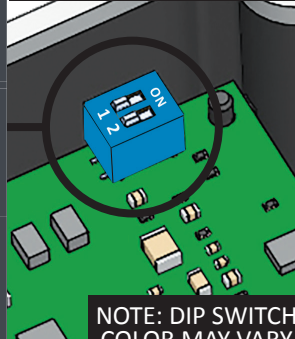

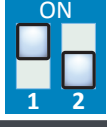
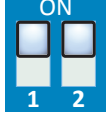
DUAL EXIT TERMINAL	SINGLE EXIT TERMINAL
 RED → POWER + BLACK → POWER - WHITE → COMMON BLUE → EXIT N.O. YELLOW → EXIT N.C.	RED → POWER + BLACK WHITE → GND or COM BLUE → FREE EXIT or OPEN TERMINAL
VOLTAGE	CURRENT
8-24 VAC 8-30 VDC	Standby: 30-70 μ A Alarm: 40-60 mA

2. TRENCH PIPE & CABLE

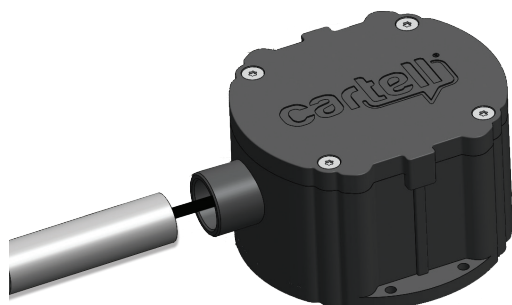


5. TEST SENSITIVITY

NOTE: IN MOST CASES DO NOT ADJUST SENSITIVITY OR REMOVE LID.

SENSITIVITY ADJUSTMENT		NOTE: HIGHEST SENSITIVITY IS WITH DIP SWITCHES IN THE OFF POSITION  NOTE: DIP SWITCH COLOR MAY VARY
HIGH (Default) Detects vehicle going 5 MPH 12-14' away 1 & 2 in OFF position		
MEDIUM Detects vehicle going 5 MPH 6-8' away 1 ON & 2 OFF position		
LOW Detects vehicle going 5 MPH 2-4' away 1 & 2 in ON position		

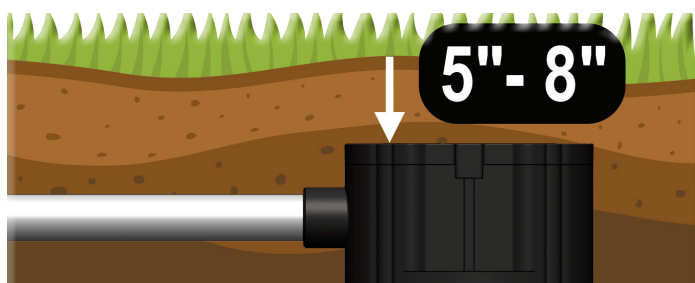
3. CONDUIT & SLIP JOINT



After pulling cable through plastic conduit, insert conduit inside slip joint on “puck.”

DO NOT GLUE (to un-install later, if needed).

6. BURY CONDUIT & “PUCK”



Trigger gate by swinging steel over puck (or driving by). If gate opens correctly, bury conduit and puck at least 5" - 8" below surface.



IF ANIMALS TRAMPLING ON TOP OF BURIED PUCK OPEN THE GATE, BURY PUCK DEEPER, PACK DIRT AROUND IT, AND MAKE IT IMMOVABLE.

OTHER INSTRUCTIONS

NOTE: CP-4 IS NOT A SAFETY. YOU MUST ADD EXTERNAL SAFETY WHEN USING CP-4.

- CP-4 may be installed above ground by screwing “puck” directly to an immovable object.
- If installed above ground, use conduit to mechanically protect cable (animals will eat).
- **Vehicle needs to be going at least 5 MPH and must pass sensor to be detected.**

Install CP-4 at least:

- 6-10 feet away from buried power, telephone, or invisible dog fence
- 10 feet away from natural gas lines
- 20 feet away from power pole with a transformer
- 100 feet back from railroad traffic
- 200 feet away from high power substation power lines
- 80-100 feet back from gate operator

Technical Specifications

Power Required	8–24 VAC or 8–30 VDC
Stand-By Current	30–70 Microamps (µA)
Alarm Current	30–40 Milliamps (mA)
Relay Time	2–3 seconds
Relay Contacts	SPDT, floating, N.O. or N.C. (Form C)
Relay Contact Rating	1 amp/24 VDC (1 mA at 5 VDC min. load)
Enclosure Rating	IP68
Strength Rating	9.53 ton-force 8646 kgf
Temperature Range	-25° F. – +140° F. -32° C. – 60° C.
Dimensions	4.5 in. dia. x 2.5 in. high 11.43 cm dia. x 6.35 cm high
Weight	5 lbs. (2.7 KG) with 100 ft. cable

DISCLAIMER OF LIABILITY — LARGER ANIMALS & CARTELL FREE EXIT

The purchaser acknowledges that automatic gates, while designed for safety and efficiency, may pose inherent risks when used in environments involving larger animals (including, but not limited to, horses, deer, elk, cattle, and other livestock). As such, Cartell expressly disclaims all liability for injuries, damages, or losses resulting from the use of automatic gates when used for the purpose of fencing, enclosing, herding, penning, restricting, capturing, and/or the like, of large animals. The purchaser assumes all risks associated with the installation, use, and maintenance of the automatic gate in environments that include large animals and acknowledges that these risks may include, but are not limited to, property damage, personal injury, harm to animals, and/or the escape or release of animals, due to the unpredictable nature of large animals and their potential interaction with automatic machinery.

To the fullest extent permitted by law, Cartell shall not be liable for any direct, indirect, incidental, or consequential damages arising out of or in connection with the use of automatic gates in areas containing large animals, regardless of how such damages arise. Purchasers are strongly advised to consult with a qualified installer and ensure proper training and safety protocols are followed when using automatic gates around large animals.

Cartell makes no warranties, express or implied, regarding the suitability of automatic gates for use in environments involving large animals.

RETURNING MERCHANDISE

CONSUMER: Contact your installer

INSTALLER: CALL BEFORE DIGGING UP

Call (717) 532-0033, option 1 to troubleshoot and receive a Return Merchandise Authorization (R.M.A.) number. Write R.M.A. number on return shipping box and any correspondence included with defective product.

DISTRIBUTOR: Send installers directly to Cartell, citing 717-532-0033(option 1) as phone number.

3 YEAR WARRANTY

All Cartell products are warranted against defects in material and workmanship for three years. This warranty does not cover defects caused by, but not limited to: acts of God, improper installation, abuse, fire damage, electrical surges, integrated system failures, improper lid/gasket installation, overtightening screws, stripping screw holes, and damage to cable caused by slicing, pulling, tangling, improper splicing, and failure to run cable in non-metallic conduit.



CONTACT INFORMATION

TECH SUPPORT & RMAs	717-532-0033, option 1
SALES	717-532-0033, option 2
SHIPPING	717-532-0033, option 3
ACCOUNTING	717-532-0033, option 4
EMAIL	info@cartell.com
ORDERING (Distributors only)	orders@cartell.com
ADDRESS	510 West King Street Shippensburg, PA 17257
WEBSITE	www.cartell.com



The CP-4 complies with part 15 of the FCC Rules. Operation is subject to the following two conditions:
(1) This device may not cause harmful interference, and (2) this device must accept any interference received, including interference that may cause undesired operation.



WARNING: This product can expose you to chemicals including Acrylonitrile, which is known to the State of California to cause cancer. For more information, go to www.P65Warnings.ca.gov.

