

# QUALITY VEHICLE DETECTION

cartell®







# PROACTIVE SECURITY & CONVENIENCE SINCE 1975

**HERE, THINGS ARE DESIGNED THE  
WAY THEY ALWAYS HAVE BEEN:  
TO BE FAILSAFE AND FAULT-PROOF.**

Our Driveway Alarm and Free Exit Systems are engineered with an exceptional level of detail and have been since we started over 45 years ago. You'll find our wireless and wired products installed at homes, businesses, and government facilities across the country, providing an extra layer of security, reassurance, and convenience when it matters most.

OUR SYSTEMS:  WIRELESS |  WIRED

**WIRELESS  
SYSTEMS**



**FREE EXIT  
SYSTEMS**



**DRIVEWAY  
ALARM  
SYSTEMS**



## **3-YEAR WARRANTY**

Every Cartell product and system is backed by an industry-leading 3-year warranty.

MEMBER OF





# PIONEERS IN RELIABLE SENSING TECHNOLOGY

ALL OUR SYSTEMS ARE POWERED BY  
**MAGNETOMETER TECHNOLOGY.**

Development of magnetometer technology dates back to the 1830s. It works off the earth's magnetic field, which is disrupted by moving steel. As we monitor the magnetic field with an inductive coil, we can detect when it's disturbed. We then create a signal, amplify it, and trip relays without false alarms.





# WHY MAGNETOMETER SENSING IS SUPERIOR

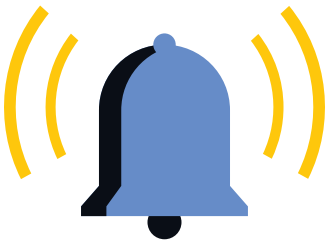
All Cartell systems are powered by magnetometer technology. That means they are only triggered by moving steel, NOT by light, motion, heat, or pressure. Because of this, if it's activated you can be sure there's a vehicle in your driveway.

Our inventor, Dr. William Flook, was introduced to this technology after WWII when it was used to detect and detonate shallow water mines. He was a pioneer in applying it to home security in the 1960s and Cartell introduced it to the industry.



## NO FALSE ALARMS

No person, animal, or blowing leaf will trigger our system. If your Cartell system is activated, you can be sure there's a vehicle in your driveway.



## RELIABLE ALERTS

Whether you're using your system to send a signal to your smart home, turn on lights, activate alarms, or open your gate for free exit, you can trust your property to Cartell.

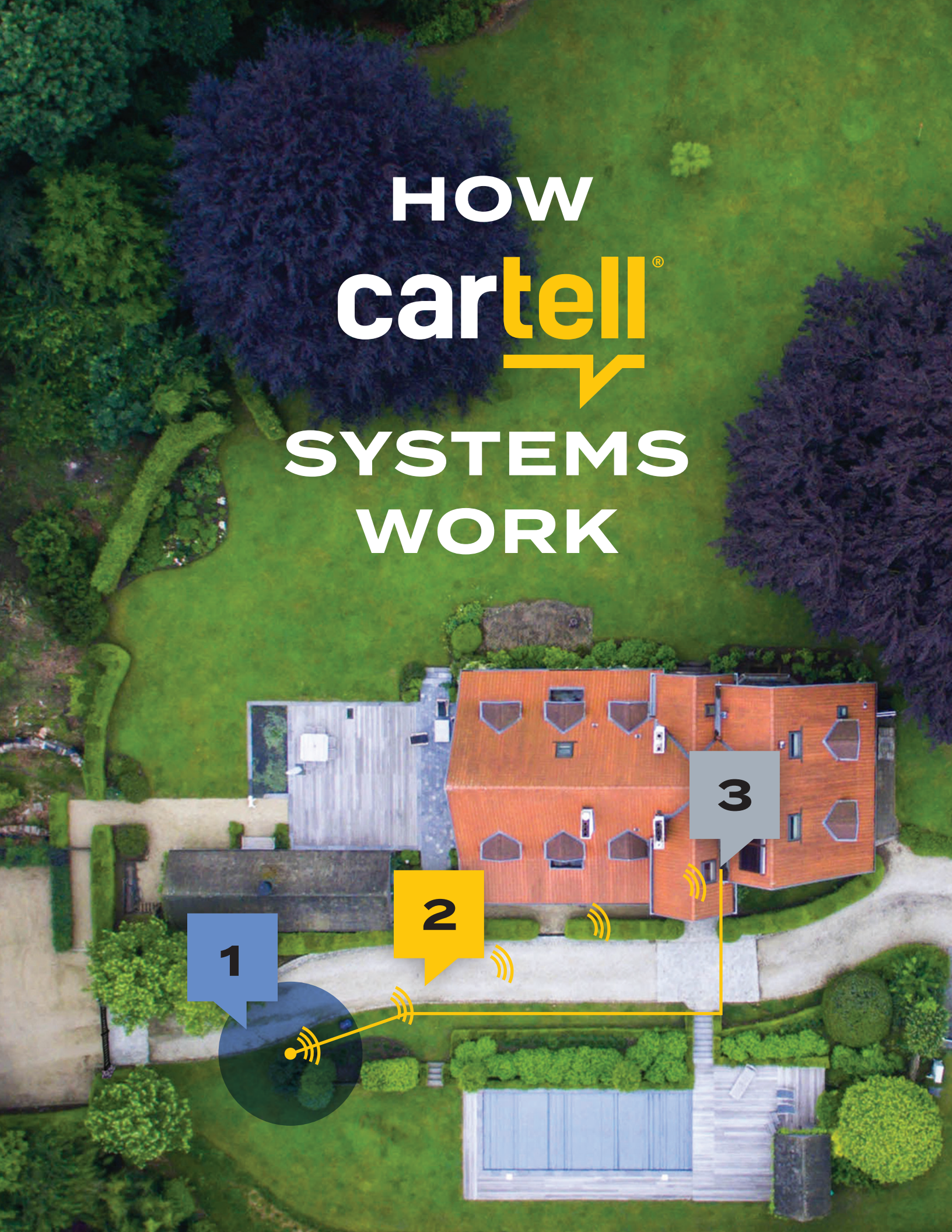


## VIRTUALLY VANDAL-PROOF

Cartell systems are discreet—and nearly invisible. Both our wired and wireless systems rely on an inconspicuous sensor, making them less prone to theft and vandalism.



# HOW cartell<sup>®</sup> SYSTEMS WORK





An aerial photograph of a residential property. A dark-colored car is parked on a light-colored gravel driveway. To the left of the driveway is a large, dense evergreen tree with dark foliage. The surrounding area includes a green lawn and other trees in the background.

**1**

## **A CAR ENTERS OR LEAVES A DRIVEWAY.**

Our systems sense this magnetic disturbance caused by moving steel.

**2**

## **A SIGNAL IS SENT.**

Once a car is detected, an activity notification is sent either wirelessly or through wires to an existing security/home automation system, a Cartell control unit, or gate operator.

**3**

## **ALERTS ARE ACTIVATED.**

Cartell systems can activate audible alerts, trigger cameras and lights, integrate with components of a security/home automation system, or automatically open a driveway gate.



# WIRELESS VEHICLE DETECTION SYSTEMS



## WIRELESS DRIVEWAY SECURITY

Our dual-purpose system can act as either a driveway alarm or provide hands-free gate automation for free exit. A fully self-contained system—with no external antenna and transmitter—means no trenching and installation in under an hour. With its reliable 915 MHz radio and redundant transmission, this is an easy-to-install system made with the industry's most trusted technology.

Similar to our other products, our dual-purpose system can be integrated with existing security/home automation devices. This system can also be customized to trigger alerts, lights, and sounders, as well as electric gate operators for free exit.



Your products are fantastic.  
We offer them on every job we  
sell and it is a well sought after  
option...You are a company with  
great products and service.



**CRAIG**

NORTHAMPTON, PENNSYLVANIA



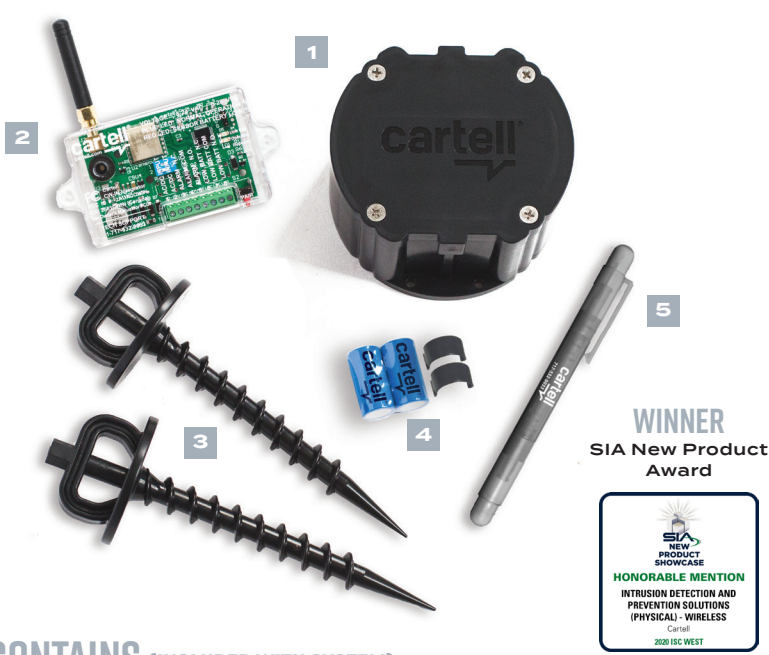


# DUAL-PURPOSE ALARM & FREE EXIT SYSTEM

# CW-SYS DUAL-PURPOSE SYSTEM

WIRELESS DUAL-PURPOSE SYSTEM THAT CONNECTS TO EXISTING SECURITY/ HOME AUTOMATION SYSTEMS AND ELECTRIC GATE OPERATORS.

Add wireless vehicle detection to existing security/home automation systems, connecting to their cameras, sounders, etc. Also, seamlessly connect to any electric gate operator (NOT SOLAR) for free exit, whether residential or commercial.



- Redundant two-way radio at 915MHz guarantees signal reaches receiver
- Range: line of sight, no obstructions up to 1,000 feet
- Easy install: no external transmitter/antenna to trench
- Install sensor in ground, in a driveway, or on an object
- Durable design, virtually indestructible, and at IP68
- Sensor sensitivity adjustment
- 1–3 year battery life

## BEST FOR

- Situations where a free exit system and/or driveway alarm are desired
- Homes with existing security, home automation, or lighting systems
- Driveways shorter than 75 feet
- Properties where trenching isn't feasible

## CONTAINS (INCLUDED WITH SYSTEM)

- Sensor “Puck”**  
Self-contained unit with sensor, transmitter, and antenna inside
- Integrator**  
Relay contact connects to any security/home automation system or electric gate operator
- Auger Screws (2)**  
Holds sensor puck in ground
- Batteries**  
CR123A (2) with battery terminal clips (2)
- Terminal Block Screwdriver**

Optional Repeater available to extend radio range. **Order part #: CW-REP** (see page 21).

## TECH SPECS

	Sensor “Puck”	Integrator
Power Required:	2 - CR123A batteries (6 V)	8–24 VAC; 8–30 VDC
Standby Current:	22 microamps (µA)	25 milliamps (mA)
Alarm Current:	130 milliamps (mA)	40–80 milliamps (mA)
Relay Time:	–	2 seconds
Relay Contacts:	–	SPDT, N.O. or N.C. (Form C)
Relay Contact Rating:	–	2 amp/24 VDC (1 mA at 5 VDC min. load)
Estimated radio range:	In ground, line-of-sight, no obstructions: up to 1,000 ft. (305 meters)*	
Estimated Battery Life:	1–3 years*	–
Enclosure Rating:	IP68	–
Strength Rating:	9.39 ton-force (8514 kgf)	–
Temperature Range:	–25°F - 140°F (-32°C - 60°C)	–
Dimensions:	4.5 in diameter x 2.5 in H (11.43 cm x 6.35 cm)	3.25 in L x 2 in H x 0.875 in D (8.25 cm x 5.08 cm x 2.22 cm)
Weight	2 lbs (.90 kg)	1 lb (.45 kg)

\* Estimate only. Radio range & battery life depend on many variables. No guarantees.

For wireless accessories, see page 22.



# CW-CON WIRELESS DRIVEWAY ALERT



## CW-CON WIRELESS DRIVEWAY SYSTEM

### CONTAINS (INCLUDED WITH SYSTEM)

- 1 Sensor "Puck"**  
Self-contained unit with sensor, transmitter, and antenna inside
- 2 Sounder**  
Direct plug-in offering over 25 sounds. Use an infinite number of sounders with up to 30 sensors
- 3 Batteries (2 - CR123A)**  
With battery terminal clips
- 4 Auger Screws (2)**  
To hold sensor in ground

### FEATURES & BENEFITS

#### SAFETY

- Always know people have driven up before they knock on your door
- No more surprises!

#### EASY TO INSTALL

- Installs in under 1 hour (on average) without the need for trenching
- No external transmitter/antenna
- Install sensor above ground on immovable object; in the ground; or in driveway
- Easily pair 30 sensors with an infinite number of sounders

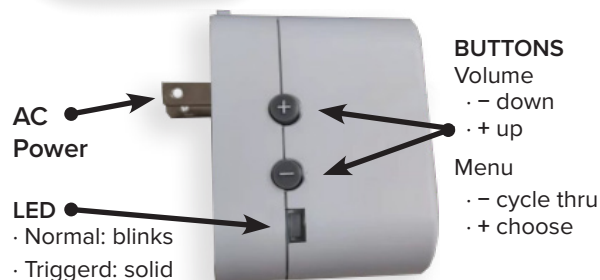
#### FOR ALL DRIVEWAYS

- Short driveways: install in middle and turn down sensor sensitivity
- Wide driveways: install multiple units in driveway (12 ft. apart) or on both sides

## NEW SOUNDER!



- 25+ sounds to choose from
- Intuitive menu with voice prompts
- LED signifies normal operation mode and trigger
- Directly plug into outlet
- Use infinite number with up to 30 sensors



#### BUTTONS

- Volume
  - - down
  - + up
- Menu
  - - cycle thru
  - + choose

#### DURABLE DESIGN

- Reliable circuitry and filtering
- Sensor IP Rating: 68
- Strength Rating: 9-tons (8514 kgf)

#### RADIO RANGE

- LoRA radio protocol at 915MHz
- Range determined by installation and obstructions to radio signal transmission
- Tested above ground: line of site, no obstructions, up to 2,500 feet (762 m)
- Tested flush with ground: line of site, no obstructions, up to 1,000 feet (305 m)

#### BATTERY LIFE

- 1-3 year battery life: CR123A (2)
- Sensor standby: 22 microamps (µA)

#### SOUNDER FEATURES

- Voice prompts through menu
- - button cycles through menu
- + button chooses option
- Over 25 sounds to choose from
- Different sound for each sensor

### TECH SPECS

	Sensor "Puck"	Sounder
Power Required:	2 - CR123A batteries (6 V)	85 ~ 230VAC Input
Standby Current:	22 microamps (µA)	25 milliamps (mA)
Alarm Current:	130 milliamps (mA)	40-80 milliamps (mA)
Input Voltage Frequency		47 ~ 63Hz
Estimated radio range:	In ground, line-of-sight, no obstructions: up to 1,000 ft. (305 meters)*	
Estimated Battery Life:	1-3 years*	-
Enclosure Rating:	IP68	-
Strength Rating:	9.39 ton-force (8514 kgf)	-
Temperature Range:	-25°F - 140°F (-32°C - 60°C)	-13° F. - +140° F. (-25° C. - 60° C.)
Dimensions:	4.5 in diameter x 2.5 in H (11.43 cm x 6.35 cm)	2.5" H x 2.5" W x 2.75" D (6.35 cm x 6.35 cm x 6.99 cm)
Weight	2 lbs (.90 kg)	.30 lb. (.14 kg)

\* Estimate only. Radio range & battery life depend on many variables. No guarantees.



WARNING: This product can expose you to chemicals including Acrylonitrile, which is known to the State of California to cause cancer. For more information, go to [www.P65Warnings.ca.gov](http://www.P65Warnings.ca.gov).





# FREE EXIT SYSTEMS



## HANDS-FREE GATE AUTOMATION

Open gates seamlessly—and without keypads or remotes—with a free exit system. Our systems detect moving steel as it approaches a driveway gate, automatically opening it for an easy exit.

Compatible with all gate operators, our free exit systems are designed to be used every day without the need for maintenance or adjustment.

“

We have sold Cartell products since 1984 and will attest to their stellar performance. I also use a free exit device on my own home gate system with complete satisfaction.

”

**MARTHA**  
CUMMING, GEORGIA



# CHOOSING A FREE EXIT SYSTEM

This side-by-side comparison of our free exit systems helps you decide which system is best for your needs.

	<b>CW-SYS WIRELESS</b> See page 9	<b>CP-4</b> See page 12	<b>PIONEER</b> See page 13
	<b>NOT RECOMMENDED FOR SOLAR*</b>		
Wireless	✓		
Self-Contained (No Output Board)		✓	
Low Power Consumption (Good for Solar)		✓	
Sensor Sensitivity Adjustment	✓	✓	✓
Triggers Accessories	✓		✓
Driveway Alarm Capability	✓		
Manual Trip Test Button			✓
Three Year Warranty	✓	✓	✓

\* Not recommended for solar gates because of receiver power consumption.



## FREE EXIT SYSTEM

# CP-4 AUTOMATIC GATE OPENER

## SELF-CONTAINED SYSTEM WITH LOWEST STANDBY CURRENT IN INDUSTRY.

Open gates automatically as guests leave a property with this all-in-one system that works with electric or solar gates.



- Hands-free and device-free gate exit
- Low standby current results in less battery maintenance for solar applications
- Universal voltage AC & DC
- Sensitivity adjustment
- Conduit ready
- Works with power or solar gates
- Cable length in feet: 100, 200, 300, & 500

### BEST FOR

- Residential gate operators
- Applications needing self-contained
- Driveways lined with dirt or grass
- Drive-through windows

### Inside the Unit



### TECH SPECS

Power Required:	8–24 VAC; 8–30 VDC
Standby Current:	30–70 microamps (µA) max.
Alarm Current:	40–50 milliamps (mA) max.
Relay Contacts:	SPDT, floating, N.O. or N.C. (Form C)
Relay Contact Rating:	1 amp/24 VDC (1 mA at 5 VDC min. load)
Relay Time:	2–3 seconds
Temperature Range:	-25°F–140°F
Dimensions:	4.5 in diameter x 2.5 in H (11.43 cm diameter x 6.35 cm H) Slip Joint: 0.5 in L x 0.875 in ID (1.27 cm L x 2.22 cm ID)
Weight:	5lbs (2.27 kg) with 100 ft cable

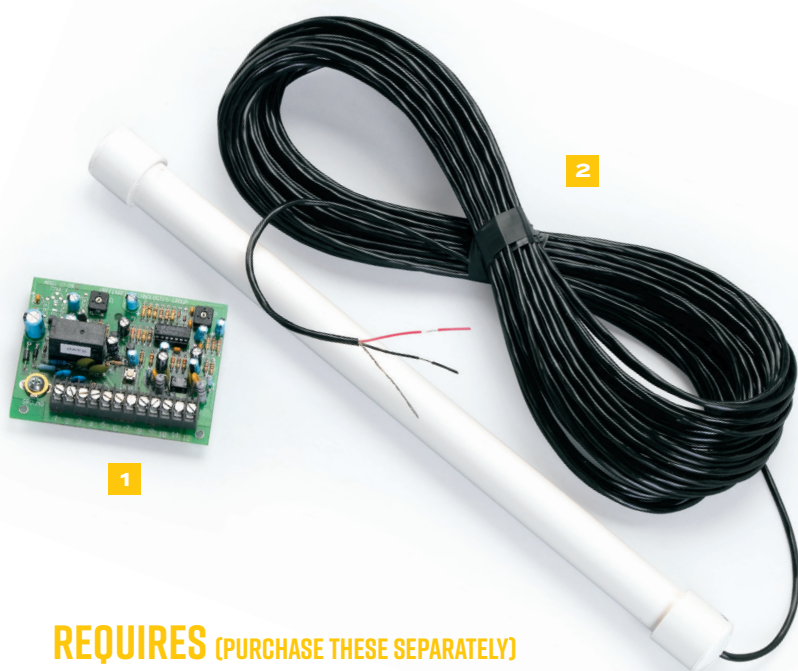


## FREE EXIT SYSTEM

# PIONEER AUTOMATIC GATE OPENER

## TWO-COMPONENT SYSTEM INCLUDES AN OUTPUT BOARD FOR INSTALLATION IN A GATE OPERATOR.

Add hands-free operation to any electric gate operator with this two-component system.



- Hands-free and device-free gate exit
- Adjustable relay time and sensor probe sensitivity
- Includes a sensor probe and external output board
- Universal voltage AC & DC
- Circuit board does not require enclosure
- Works best with electric gates

### BEST FOR

- Residential gate operators
- Sensitivity adjustment needed
- Drive-through windows
- Reliable hard wired

## REQUIRES (PURCHASE THESE SEPARATELY)

- CT-3BG Control Board**  
Single timed relay output installed in gate operator
- CT-6 Sensor Probe**  
Bundled with custom cable from 100 ft. to 3,000 ft. in 100 ft. increments

## TECH SPECS

Power Required:	8–31 VAC; 10–41 VDC
Standby Current:	Under 1 milliamp (mA)
Alarm Current:	30 milliamps (mA) max.
Relay Contacts:	Double Pole, Double-Throw
Relay Contact Rating:	1st Pole: 12 VDC, 200 mA for remotes 2nd Pole: SPDT, 5 amps, 30 VDC
Relay Time:	0.5–15 seconds (adjustable)
Temperature Range:	0°F–140°F
Dimensions:	5.25 in x 5.25 in x 2 in with case (13.98 cm x 13.98 cm x 5.08 cm) 4.125 in x 3.25 in board only (10.8 cm x 8.26 cm)
Weight:	2.5lbs (1.14 kg) with case; .25 lb board only



# DRIVEWAY ALARM SYSTEMS



## EARLY DETECTION & PROACTIVE SECURITY

Our driveway alarm systems guard homes where they begin: the driveway. Our customers know the moment a car enters their property, whether they're at home or away, so they'll never be caught off guard.

Our systems can be customized to meet your unique needs, triggering alerts and lights for early warning, or integrating with existing security/home automation systems.



Cartell is truly my favorite feature in our automated home. Not only does Cartell provide a convenience by alerting me to visitors when I am in the house, but I always feel safe when I return home alone at night because Cartell turns on the outside lights as soon as I enter the driveway. I used to feel uncomfortable coming home to an empty house, but with Cartell I am completely at ease returning to my well-lit home.



**EMILY**

PAUPACK, PENNSYLVANIA



# CHOOSING A DRIVEWAY ALARM SYSTEM

Not sure which system to choose? Use this side-by-side comparison of our driveway alarm systems to choose the right product for your needs.

	<b>CW-SYS WIRELESS</b> <small>See page 9</small>	<b>DRIVEGUARD</b> <small>See page 16</small>	<b>ULTRA</b> <small>See page 17</small>	<b>INTEGRATOR</b> <small>See page 18</small>
Stand-alone System		✓	✓	
Requires Trenching		✓	✓	✓
Activates Sounders & Cameras	✓ *	✓	✓	✓ *
Activates Lights	✓ *		✓	✓ *
Integrates with Existing Home Security or Automation Systems	✓			✓
Free Exit Capability	✓ ** NOT RECOMMENDED FOR SOLAR GATES			
Three Year Warranty	✓	✓	✓	✓

\* Our integrating systems seamlessly connect with every security/home automation system to trigger their features and components

\*\* Will integrate with electric gate operators. Not recommended for solar gates because of receiver power consumption.

## DRIVEWAY ALARM SYSTEM

## DRIVEGUARD

## STAND-ALONE SINGLE-RELAY WIRED SYSTEM

Detect guests before they reach the front door and activate audible alerts.



- Activates multiple sounders or cameras when a vehicle approaches
- Buried probe is virtually vandal-proof
- Supports up to 4 sensor probes
- Supports up to 12 sounders
- Adjustable sensitivity and relay time
- Accommodates any sensing device with a N.O. relay contact
- Five year warranty

## BEST FOR

- Homes with driveways longer than 75 feet
- Protecting large estates and construction/ farm machinery
- Deterring vandalism and theft on vacant lots
- Commercial security applications

## REQUIRES (PURCHASE THESE SEPARATELY)

- 1 CT-2B Control Unit**  
Single timed relay output
- 2 CW-PSU Power Supply**  
115 VAC in/12 VDC out  
Included with CT-2B
- 3 CT-A1 Sounder**  
Triple zone, volume controlled, electronic membrane sounder
- 4 CT-6 Sensor Probe**  
Bundled with custom cable from 100 ft. to 3,000 ft.  
in 100 ft. increments

## TECH SPECS

Power Required:	8–31 VAC; 10–41 VDC
Standby Current:	Under 1 milliamp (mA)
Alarm Current:	45 milliamps (mA) max (with 1 sounder)
Relay Contact Rating:	Double pole, Double-Throw 1st Pole: 12 VDC, 200 mA for remotes 2nd Pole: SPDT, 5 amps, 30 VDC
Relay Time:	0.5 seconds to 15 seconds
Temperature Range:	0°F–140°F
Dimensions (with Case):	5.5 in x 5.5 in x 2 in (13.97 cm x 13.97 cm x 5.08 cm)
Dimensions (board only):	4.125 in x 3.25 in (10.48 cm x 8.26 cm)
Weight:	2.5 lbs with case (1.13 kg); 0.25 lbs board only (114 g)



## DRIVEWAY ALARM SYSTEM

# DRIVEGUARD ULTRA

## STAND-ALONE DUAL-RELAY WIRED SYSTEM

Automatically light up driveways and homes, activate audible alerts, and trigger cameras when vehicles arrive.

- Automatically lights up driveways and homes and activates multiple sounders or cameras when a vehicle approaches
- Buried probe is virtually vandal-proof
- Supports up to 100 sensor probes
- Supports up to 12 sounders
- Adjustable sensitivity and relay time
- Accommodates any sensing device with a N.O. relay contact
- Five year warranty

### BEST FOR

- Homes with driveways longer than 75 feet
- Protecting large estates and construction/farm machinery
- Deterring vandalism and theft on vacant lots
- Commercial security applications

### TECH SPECS

Power Required:	12 VAC; 12–15 VDC
Standby Current:	35 milliamps (mA)
Alarm Current:	180 milliamps (mA) max (with 1 sounder)
Relay Contact Rating:	Double pole, Double-Throw 1st Pole: 12 VDC, 200 mA for remotes 2nd Pole: SPDT, 5 amps, 30 VDC
Relay Time:	.5 seconds to 30 seconds
Floodlight Contact Rating:	SPST, 15 amp, 125 VAC CSA (1800 watts)
Floodlight Time:	15 seconds to 15 minutes
Floodlight Delay:	1 second to 2.5 minutes
Battery Charger:	13.5 VDC, 5 mA min. charge (w/voltage cutoff)
Temperature Range:	0°F–140°F
Dimensions & Weight:	7.5 in x 12.75 in x 3 in (19.05 cm x 32.39 cm x 7.62 cm) at 5 lbs. (2.27 kg)



### REQUIRES (PURCHASE THESE SEPARATELY)

- CF-2C Control Unit**  
Dual timed relay output with 15 amp floodlight circuit
- CW-PSU Power Supply**  
115 VAC in/12 VDC out  
Included with CF-2C
- CT-6 Sensor Probe**  
Bundled with custom cable from 100 ft. to 3,000 ft.  
in 100 ft. increments
- CT-A1 Sounder**  
Triple zone, volume controlled, electronic membrane sounder
- FC-6 Photocell**  
Included with CF-2C  
Keeps lights off during daytime

## DRIVEWAY ALARM SYSTEM

# DRIVEGUARD INTEGRATOR

## WIRED SYSTEM THAT CONNECTS TO EXISTING SECURITY, AUTOMATION & LIGHTING SYSTEMS

Add failsafe vehicle detection to existing security/home automation systems, and seamlessly connect to existing cameras and sounders, and monitor properties from anywhere when connected to existing system's computer.



- Activates security/home automation system components when a vehicle approaches
- Buried probe is virtually vandal-proof
- Supports up to 4 sensor probes
- Adjustable sensitivity and relay time
- Accommodates any sensing device with a N.O. relay contact
- Five year warranty

### BEST FOR

- Homes with existing security, home automation, or lighting systems
- Driveways longer than 75 feet
- Commercial security applications

### REQUIRES (PURCHASE THESE SEPARATELY)

- 1 CT-2B Control Unit**  
Single timed relay output
- 2 CT-6 Sensor Probe**  
Bundled with custom cable from 100 ft. to 3,000 ft. in 100 ft. increments
- 3 CW-PSU Power Supply**  
115 VAC in/12 VDC out  
Included with CT-2B

### TECH SPECS

Power Required:	8–31 VAC; 10–41 VDC
Standby Current:	Under 1 milliamp (mA)
Alarm Current:	45 milliamps (mA) max (with 1 sounder)
Relay Contact Rating:	Double pole, Double-Throw 1st Pole: 12 VDC, 200 mA for remotes 2nd Pole: SPDT, 5 amps, 30 VDC
Relay Time:	0.5 seconds to 15 seconds
Temperature Range:	0°F–140°F
Dimensions (with Case):	5.5 in x 5.5 in x 2 in (13.97 cm x 13.97 cm x 5.08 cm)
Dimensions (board only):	4.125 in x 3.25 in (10.48 cm x 8.26 cm)
Weight:	2.5 lbs with case (1.13 kg); 0.25 lbs board only (114 g)



# Accessories & Components

Customize Cartell systems with multiple sounders and photocells, or order extra probes and sensor pucks for multiple driveways or those wider than 12 feet.

## SOUNDERS

DRIVEWAY ALARM COMPATIBLE

Our Indoor and Outdoor Sounders can be purchased separately and are compatible with all of our wired Driveway Alarm Systems.



### CT-A1 Indoor Sounder

Installs in a single-gang electric box and works with DriveGuard and DriveGuard Ultra Systems. When used with DriveGuard Ultra, three buttons on plate interact with lights and sensor:

**ON** Turns lights on, putting them on a timer

**RESET** Turns lights off if they have not timed out

**EXIT** Turns sensor probe off so car can pass by and not trip the system

\*Note: These buttons are not functional when the sounder is used with the DriveGuard system

- Triple zone allows multiple monitoring
- 3 tone types: Steady, fast-pulse, and slow-pulse
- Volume control with muting
- Screw terminal hook up
- Decorative cover hides screws
- Includes mounting hardware
- Mounts in a single-gang electric box
- Five year warranty



### CT-11 Outdoor Sounder

This weatherproof sounder has a piezo-type Mallory Sonalert® for mounting in an outdoor single-gang electric box. It is ideal for areas such as pools, greenhouses, and barns. Tone length and volume can be adjusted.

- Weatherproof
- Ideal for pools, greenhouses and barns
- Adjustable pulsating tone
- 90 dB with manual volume control
- Includes gasket seal and screws
- Mounts in a single-gang electric box
- Five year warranty



### AA-1 Alarm Alert

This universal sounder has a piezo-type Mallory Sonalert® audible signal device. It is suited for any security alarm panel or home automation panel. Requiring just two wires (power positive and power negative), this device has volume control and may be muted.

- Universal sounder
- Suited for any security alarm or home automation panel
- Requires just two connecting wires
- Adjustable volume control
- Includes mounting hardware
- Mounts in a single-gang electric box
- Five year warranty

## PHOTOCELLS

DRIVEWAY ALARM COMPATIBLE



### FC-6 Indoor Photocell

Install on an inside window and wire to a CF-2C control unit to activate lights when vehicle motion is detected. Photocell will keep lights from coming on when system is activated during daylight hours.

- Use with CF-2C control unit only (included with control unit but may also be purchased separately)
- Double-sided tape for attaching to window looking out
- Screw terminal hookup
- Saves money by keeping lights off during daylight hours
- Five year warranty



### FC-12 Outdoor Photocell

Designed for outdoor installation, this photocell is sealed and mounted in an LB electrical junction box. When wired to the CF-2C control unit, it activates lights when vehicle motion is detected. Photocell will keep lights from coming on when system is activated during daylight hours. May be used as a conduit through which sensor probe wires can be brought into a home.

- Use with CF-2C control unit only
- Photocell is sealed in LB junction box
- Weatherproof for outdoor mounting
- Allows installers to bring probe wires safely into home
- Screw terminal hookup
- Saves money by keeping lights off during daylight hours
- Five year warranty

## SENSOR PROBE

DRIVEWAY ALARM COMPATIBLE

FREE EXIT COMPATIBLE



### CT-6 Sensor Probe

Direct burial cable is attached at the factory. Attached cable comes in increments of 100', from 100' to 3000'. Direct burial cable, but non-metallic conduit required. Cable can be spliced in the field.

- Use with all wired driveway alarm systems and Pioneer Free Exit system
- Covers 12-foot-wide driveway when buried beside driveway (use 2 probes for wider driveways)
- Maintenance-free, solid construction, sealed and weather proof
- Field-spliceable with underground splice kit or waterproof connector
- Fully shielded to avoid false alarms caused by RF noise
- Attached cable in 100 ft. increments from 100 ft. to 3,000 ft.
- Five year warranty

## POWER SUPPLY

DRIVEWAY ALARM COMPATIBLE

WIRELESS COMPATIBLE



### CW-PSU Power Supply

This 12VAC plug-in power supply is used with Cartell control units. When integrating Cartell hard-wired products with other systems, we recommend using this power supply.

- Use with CT-2B, CF-2C, & Wireless Integrator/Repeater
- Made of durable, molded plastic
- 115 VAC input; 12 VDC output
- 6-foot leads with pigtailed
- Five year warranty



## WIRELESS COMPONENT SYSTEMS

WIRELESS COMPATIBLE

### CW-SEN SENSOR

Add up to ten (10) sensors to an infinite number of Integrators

Includes: Puck **1** + Auger Screws (2) **2** + Battery Clips (2) **3**  
CR123 Batteries (2) **4**

### CW-INT INTEGRATOR

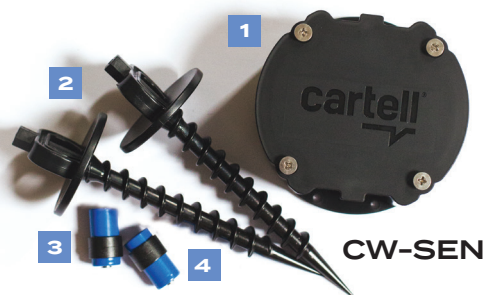
Add an infinite number of Integrators to up to 10 sensors

Includes: Integrator Board and Enclosure **1**

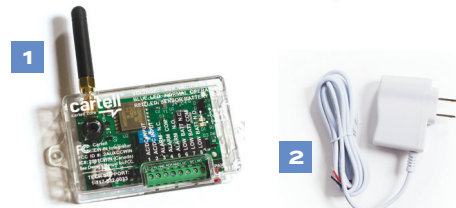
### CW-REP REPEATER

Turn an Integrator instantly into a repeater with a dip switch.

Includes: Integrator **1** + Power Supply **2**



CW-SEN



CW-INT & CW-REP



CW-IBO

### CW-ANT

Stilo GSM Antenna **1**

### CW-COA

1 meter Coaxial Cable **2**

### CW-ACO

Stilo GSM Antenna **1** with 1 meter Coaxial Cable **2**



CW-ACO

### CW-ASC

Auger Screws (2) to hold sensor puck in ground



CW-ASC

### CW-LID

Sensor Puck Lid **1** + Screws (4) **2** + Gasket **3**

### CW-PSC

Sensor Puck Lid Screws (4) **2**

### CW-GAS

Sensor Puck Gasket **3**



CW-LID

### CW-BCG

Batteries (2) **1** + Battery Clips (2) **2** + Gasket **3**

### CW-BCL

Battery Clips (2) **2**

### CW-GAS

Sensor Puck Gasket **3**



CW-BCG

### CW-BOX

Box with lid **1** + Screws (3) **2** + Auger Screws (3) **3**

Use this sturdy box to cover the sensor puck when buried beside the driveway. Especially useful if you have animals stepping on your sensor, creating false alarms (by physically moving the sensor). Its rigid construction protects the puck while giving free access to it. Comes with three auger screws to hold it in place. Bury so removable lid is just below ground surface. Will not impede radio signal transmission.



CW-BOX



# **JOIN THE CARTELL** **TEAM OF** **PROFESSIONALS**

Cartell vehicle detection systems are distributed and installed  
by a global network of skilled professionals.



# CARTELL CERTIFIED INSTALLER

Our exclusive Certified Installer Program is available to installers of security, home automation, electrical, landscaping, dog fence, and/or automatic gate systems. Knowledge of electrical codes, electrical wiring, CAT-5 wiring and trenching are essential for our wired driveway systems; and knowledge of gate operator installation and trenching is essential for our wired free exit products. With our wireless systems, installation is easier, requiring minimal digging (if installed beside driveway) and boring a 4.5" hole into concrete or asphalt (if installing sensor in driveway). We pledge to give you whatever is needed to grow your business and provide Cartell to your customers.

## ADVANTAGES

- Hundreds of distribution channels
- Distributor drop-shipping available
- Exclusive listing on our website
- Direct leads to you
- Expert, free technical support
- Direct-to-you warranty service
- Fast RMA turn around
- Free return shipping for RMAs
- Free demo products
- Free marketing literature
- National advertising
- Periodic updates

## DEFINITIONS AND QUALIFICATIONS

We define an installing company as a legitimate organization with one or more employees, working out of a central location. Installers must have knowledge in their field of expertise and be willing to service what they sell.

# CARTELL DISTRIBUTOR

As a manufacturer that sells only through distribution, we are acutely aware of the importance of our distributors. They are our sole sales conduit. As you consider the decision to enroll as a distributor, we hope you will seriously ponder the advantages, qualifications, and simple requests we list below. We pledge to give you whatever is needed to grow your business and provide Cartell to your customers.

## ADVANTAGES

- No stock requirement
- No minimum ship requirement
- Drop shipping always available
- Prepay discount, per approval
- Volume discounts on products
- Free listing on website
- Free marketing literature
- Free demo products
- Free, expert technical support
- Fast repair turn around
- Periodic updates/incentives
- National advertising

## DEFINITIONS AND QUALIFICATIONS

We define a distributor as a wholesale organization whose sole focus is to stock and sell products to professional installers. If the interested organization does any type of installation, it will not qualify as a distributor.

## OUR MISSION

To create and build the best vehicle detection equipment in the world

## OUR HOW

To use innovative engineering and process-driven manufacturing techniques to create and build highest quality products with 100% product testing to ensure reliability and longevity

## OUR WHY

We exist to glorify God by facilitating safety, supporting Christian endeavors, and enabling employee growth

## OUR CULTURE

Cartell is a place of professional excellence, collaborative teamwork, and gracious hospitality

## OUR CORE VALUES

### 1. Family

Being a family makes us passionate for the safety of others; after all, they're part of the family. This promotes trust, loyalty, and love. It's the glue that binds us to customers, community, and co-workers.

### 2. Honesty

Honesty demands we create useful and quality-rich products. We believe inferior products are dishonest. Integrity rules our relationship with customers before and after the sale.

### 3. Drive

At Cartell, we are enthusiastic, responsive, and intuitive. We are driven to create solutions and remove obstacles. We listen to customers' needs and innovate to meet them with proven reliability.

## OUR WARRANTY

All Cartell products are warranted against defects in material and workmanship for five years. This warranty does not cover defects caused by, but not limited to: acts of God, improper installation, abuse, fire damage, electrical surges, integrated system failures, improper lid/gasket installation, over-tightening screws, stripping screw holes, damage to cable caused by slicing, pulling, tangling, improper splicing, and failure to run cable in non-metallic conduit.



**WINNER**  
SIA 2020 New  
Product Award



**CARTELL.COM**

(717) 532-0033  
INFO@CARTELL.COM

510 W KING STREET  
SHIPPENSBURG, PA 17257

TECH SUPPORT/RMAS  
SALES  
SHIPPING  
ACCOUNTING  
ORDERING (DISTRIBUTORS ONLY)

(717) 532-0033, OPTION 1  
(717) 532-0033, OPTION 2  
(717) 532-0033, OPTION 3  
(717) 532-0033, OPTION 4  
SEND POs TO ORDERS@CARTELL.COM

